

ST. JOSEPH'S
COLLEGE, MOOLAMATTOM
ARAKULAM P.O- 685591, IDUKKI, KERALA



2.3.1 Student centric methods, such as experiential learning, participative learning and problem-solving methodologies are used for enhancing learning experiences and teachers use ICT-enabled tools including online resources for effective teaching and learning process

PHILATELY



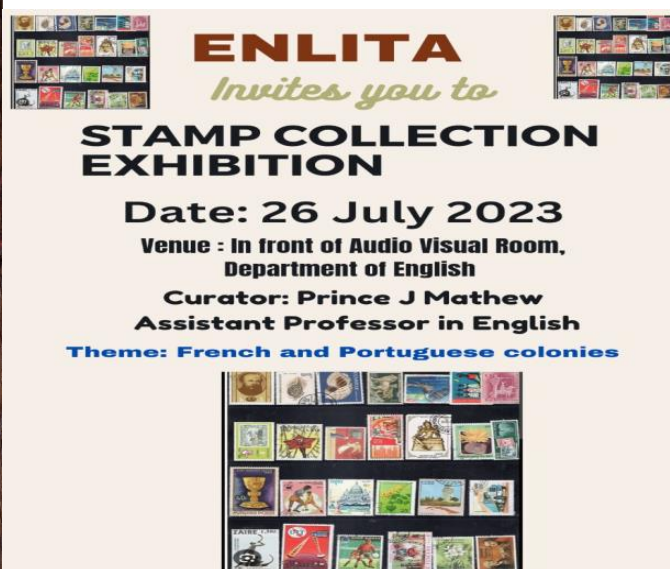
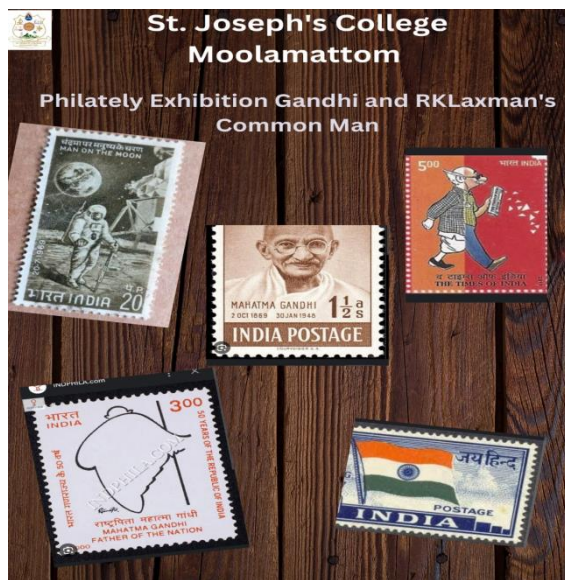
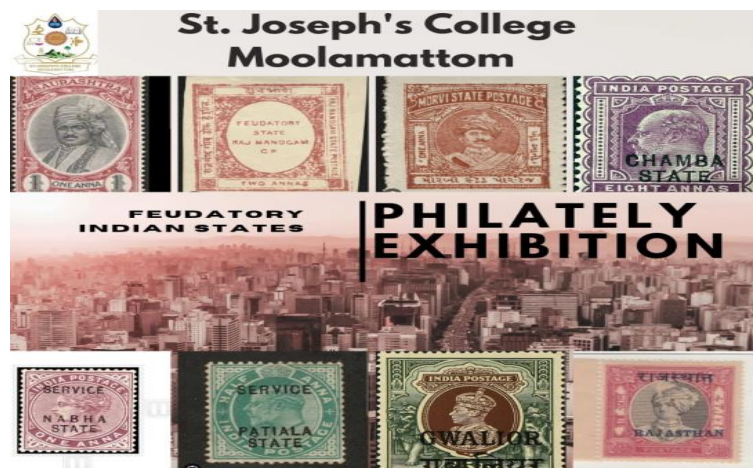


PHILATELIC EXHIBITIONS

Philatelic exhibitions are held every week related to various themes like Indian constitutions to the world, freedom struggle, national heroes, national monuments, Colonisation, World War, Indian Pre-independence States etc. It is curated by the request of students.

Assistant Professor . Prince J Mathew is the in charge of Philatelic Exhibitions. It instils a sense of history, nationalism, and sense of the world in students.

Brochure:

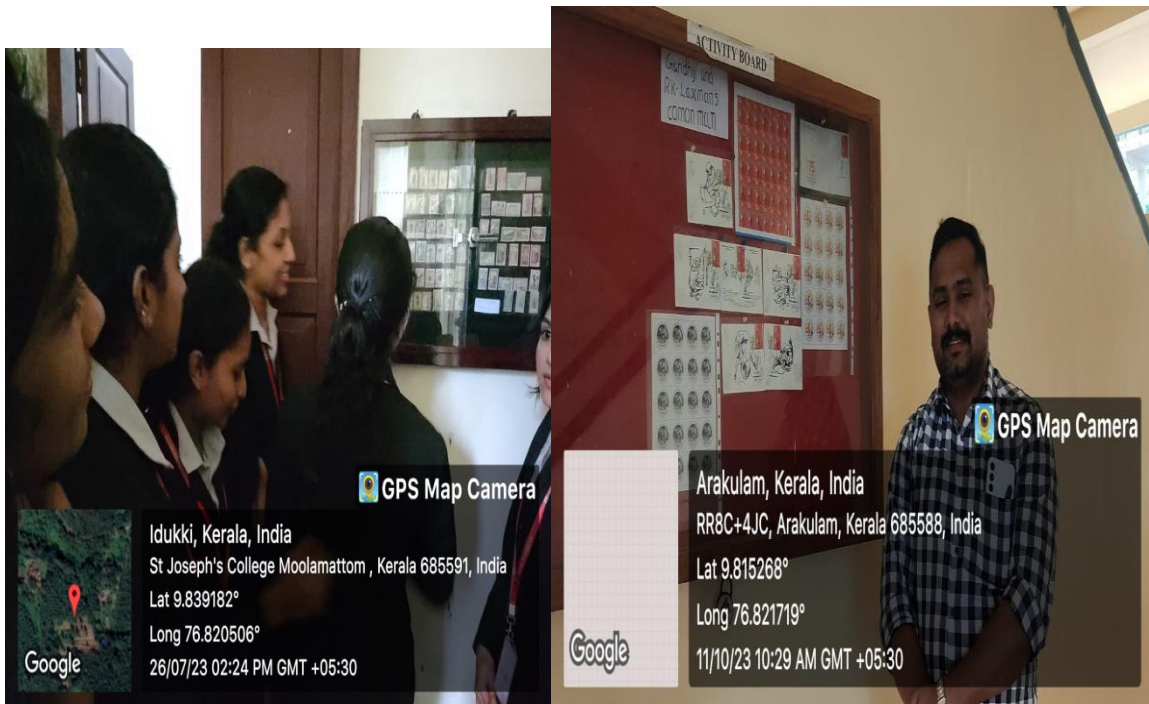
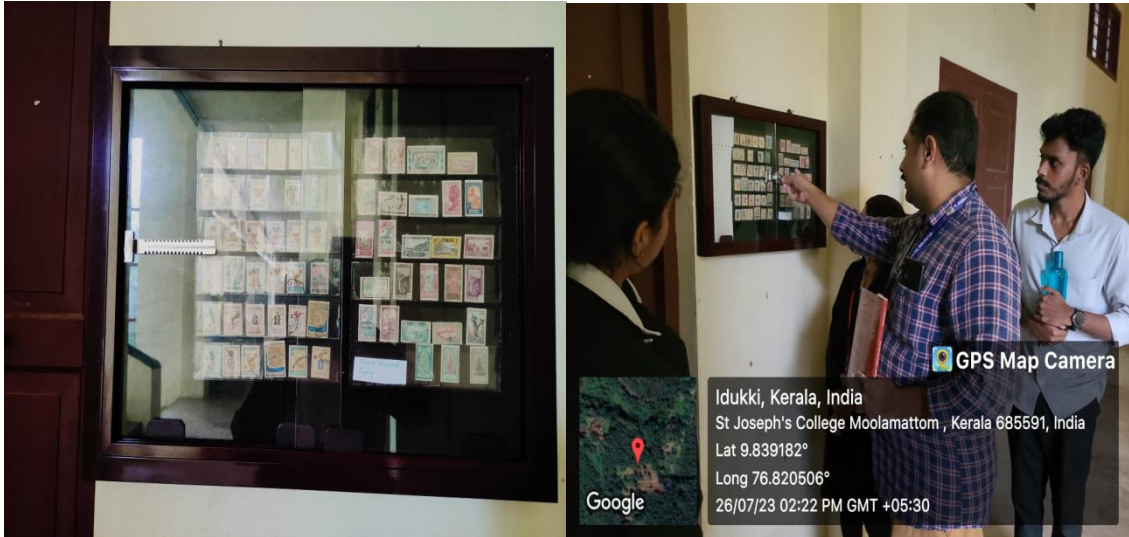




ST. JOSEPH'S COLLEGE MOOLAMATTOM

ARAKULAM P.O- 685591
IDUKKI, KERALA
stjosephscollegemoolamattom.ac.in

Photos



Students and coordinator in the exhibition